

()

**(S_f)
PCR**

*

(// : // :)

PCR

S-RNase

(S-locus)

Tuono

Ferralise Ferragnes

(S_f)

(Reciprocal)

(Bagging)

DNA

PCR

S

PCR

PCR

:

.(Socias i Company, 1990)

(SSI)

.(Ebert et al., 1989)

(GSI)

(S-locus)

S-RNase
 S
 (Lopez et al., 2004)
 (Bagging)
 (NEPHGE)
 PCR
 PCR
 (Lopez et al., 2006) $S_1, S_2, S_3, \dots, S_{27}$
 S_f
 $S_3 S_1$
 Boskovic et al.
 (2001) Bale (1997 & 1999)
 Felipe
 Ortega Sociasi Company
 $S_1 S_1$
 (Boskovik et al., 1997)
 Tufts & Tufts
 (Sociasi Company, Philp
 (Boskovic et al., 2002) .1990)
 PCR
 Tamurra et al. Almedia
 (2000 & Chanuntapitate & Lopez (1999 & 2003)
 Sociasi Company & Manuel Alonso 2004)
 (2007) Martinez Gomez (2005)
 (Alonso & Sociasi Company, 2005)
 PCR (S_i)
 (CITA) Grassley & Olivier Puglia
 Tuono
 (Godini, 2002)

PCR (S_f) :

(2001) Ma & Oliveria

ConF, ConR - S_fF, S_fR - S₃F, S₃R1 -
PCR S₃F, S₃R2 - AS1II, AmyC5R

ConF, ConR, S₃R2: :

PCR ConF, S₃F, ConR

(Reciprocal)

Ferralise (S₁S₃) Ferragnes (S₁S₃)

S₃R2 S₃R1

S₃F

S₃

Tuono (S₁S_f)

(S₃F S₃R1)

()

S₃

S₃R2

(S₃ S_f S₁ S_f)

RC4

Bagging

PCR

DNA

DNA

{(50% S₃ S_f , 50% S_f S_f) (50% S₁ S_f, 50%, S_f S_f)}

PCR

(Working Solution)

PCR

KCl

Tris-HCl (pH 8.2)

/

MgCl₂

/

(dNTPs)

Taq DNA

DNA

PCR

(Gepts &

DNA

°C

DNA

Clegg, 1989)

°C

°C

PCR

°C

°C

PCR

°C (annealing)

(2000 & 2003) Channuntapitat et al.

S ₃ S _f S _f S _f	S ₃ S _f X S ₃ S _f	S ₁ S _f X S ₃ S _f	♀ Ferralise(S ₁ S ₃) x ♂ Tuono(S ₁ S _f)
S ₃ S _f S _f S _f	S ₃ S _f X S ₃ S _f	S ₃ S ₁ X S ₃ S _f	♀ Tuono(S ₁ S _f) x ♂ Ferragnes(S ₁ S ₃)
S ₃ S _f S _f S _f	S ₃ S _f X S ₃ S _f	S ₁ S _f X S ₃ S _f	♀ Ferralise(S ₁ S ₃) x ♂ Tuono(S ₁ S _f)
S ₁ S _f S _f S _f	S ₁ S _f X S ₁ S _f	S ₁ S _f X S ₃ S _f	♀ Ferragnes(S ₁ S ₃) x ♂ Tuono(S ₁ S _f)
S ₁ S _f S _f S _f	S ₁ S _f X S ₁ S _f	S ₁ S _f X S ₃ S _f	♀ Ferralise(S ₁ S ₃) x ♂ Tuono(S ₁ S _f)

ConF-ConR
 (2001 & 2003) Channuntapitat et al.
 S₁, S_f, S₃
 S_f
 () S₃ ()

TBE % PCR
 (1µg / ml⁻¹)
 (Gel Doc 2000 UV Transilluminator)

Tuono(S1Sf)
 Ferralise (S₁S₃) Ferragnes(S₁S₃)
 Tuono

S₃ S₁ S_f
 AS1II)
 (2000) Tamura et al. (AmyC5R
 S_f (2004) Sanchez-Perez et al.
 (AmyC5R AS1II)

Tuono
 S₃S_f S₁S_f

Tuono
 S₃S_f S₁S₃

S_f S₃

S₃ S_f

S₃ S_f S₁ S_f

DNA

()

S₃ S_f

S₃ S3F-S3R2 S3F-S3R1
 bp bp

S_fS_f
 S₃S_f S₁S_f

(2005) Sociasi Company & Alonso

PCR
 ConF, ConR, S3R2 ConF, S3F, ConR

SfF-SfR

(2005) Alonso et al.

PCR

(S_f)

:

()

PCR

PCR

- S₃ S_f S₃ S_f

%

%

S₁₁

()

(S₃ S₁)

S_x

PCR

(S₃ S_f S₃ S_f) (S₁ S_f S₁ S_f)

S ₃ S _f X S ₃ S _f	S ₃ S _f	S ₃ S _f X S ₃ S _f	S ₃ S _f	S ₃ S _f X S ₃ S _f	S ₃ S _f	S ₁ S _f X S ₁ S _f	S ₁ S _f	S ₁ S _f X S ₁ S _f	S ₁ S _f
1_01	S ₃ S _f	2_01	S _f S _f	3_01	S ₃ S _f	4_01	S ₁ S _f	5_01	S ₁ S _f
1_02	S ₃ S _f	2_02	S ₃ S _f	3_02	S _f S _f	4_02	S _f S _f	5_02	S ₁ S _f
1_03	S ₃ S _f	2_03	S ₃ S _f	3_03	S _f S _f	4_03	S _f S _f	5_03	S ₁ S _f
1_04	S _f S _f	2_04	S ₃ S _f	3_04	S _f S _f	4_04	S _f S _f	5_04	S _f S _f
1_05	S ₃ S _f	2_05	S _f S _f	3_05	S ₃ S _f	4_05	S ₁ S _f	5_05	S ₁ S _f
1_06	S _f S _f	2_06	S _f S _f	3_06	S _f S _f	4_06	S ₁ S _f		
1_07	S _f S _f	2_07	S _f S _f	3_07	S ₃ S _f				
1_08	S _f S _f	2_08	S _f S _f	3_08	S ₃ S _f				
1_09	S ₃ S _f	2_09	S _f S _f	3_09	S ₃ S _f				
1_10	S ₃ S _f	2_10	S ₃ S _f	3_10	S ₃ S _f				
1_11	S _f S _f	2_11	S ₃ S _x	3_11	S ₃ S _f				
1_12	S ₃ S _f	2_12	S ₃ S _f	3_12	S _f S _f				
1_13	S ₃ S _f	2_13	S _f S _f	3_13	S _f S _f				
1_14	S ₃ S _f	2_14	S _f S _f	3_14	S ₃ S _f				
1_15	S _f S _f	2_15	S ₃ S _f	3_15	S _f S _f				
1_16	S _f S _f	2_16	S _f S _f	3_16	S _f S _f				
1_17	S _f S _f			3_17	S _f S _f				
1_18	S _f S _f			3_18	S _f S _f				
1_19	S ₃ S _f			3_19	S _f S _f				
1_20	S ₃ S _f			3_20	S _f S _f				
1_21	S ₃ S _f			3_21	S _f S _f				
				3_22	S _f S _f				
				3_23	S _f S _f				

χ²

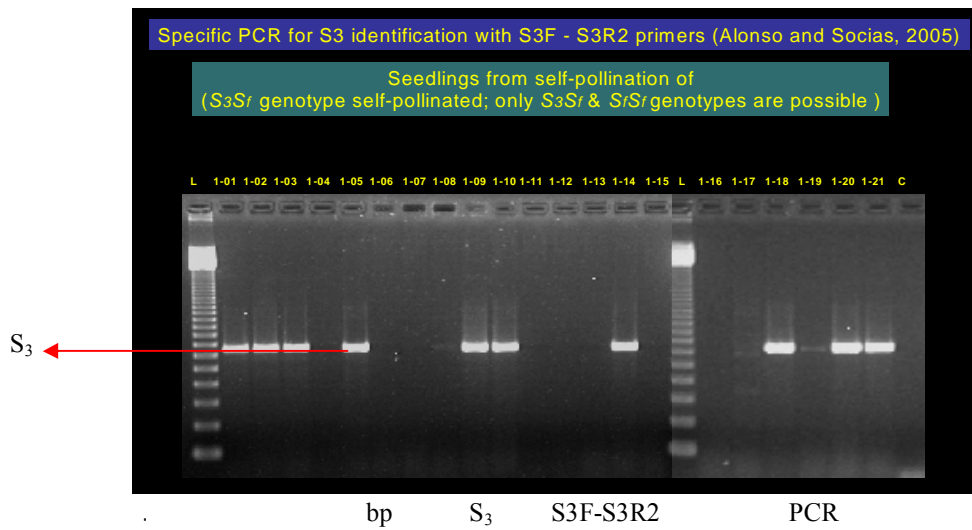
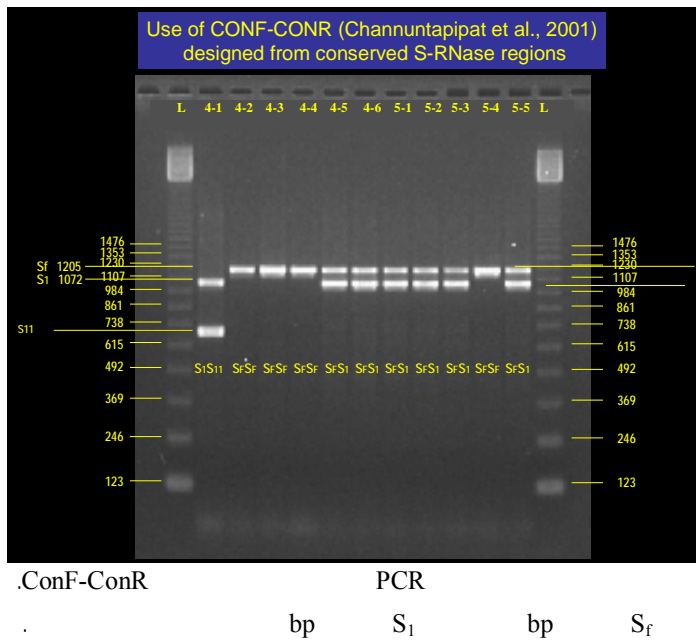
PCR

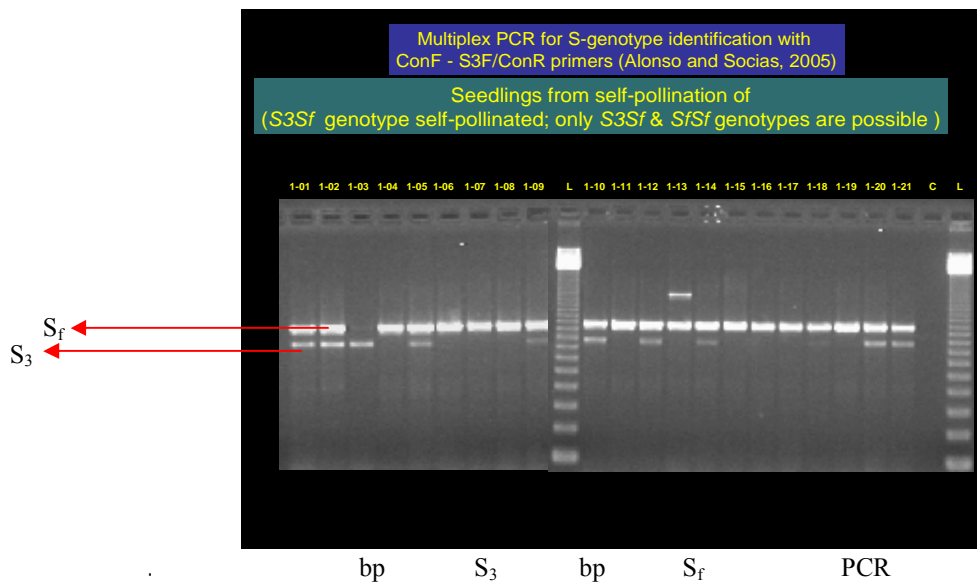
χ²

(S ₃ S _f)	♀ FERRALISE x ♂ TUONO	S ₃ S _f S _f S _f	/ ns
(S ₃ S _f)	♀ TUONO x ♂ FERRAGNES	S ₃ S _f S _f S _f	/ ns
(S ₃ S _f)	♀ FERRALISE x ♂ TUONO	S ₃ S _f S _f S _f	/ ns
(S ₁ S _f)	♀ FERRAGNES x ♂ TUONO	S ₁ S _f S _f S _f	/ ns
(S ₁ S _f)	♀ FERRALISE x ♂ TUONO	S ₁ S _f S _f S _f	/ ns

S3 Sf S1 Sf

			χ^2	
S ₃ S _f	S ₃ S _f	/	/	ns
	S _f S _f	/	/	
S ₁ S _f	S ₁ S _f	/	/	
	S _f S _f	/	/	
S _x S _f	S _x S _f	/	/	ns
	S _f S _f	/	/	
		: ns	S _f	S _x :





REFERENCES

- Almeida, C. R. M. (1945). Àcêrca da incompatibilidade na amendoeira. *An Inst Agron Lisb*, 15, 1–186.
- Alonso, J. M. & Socias i Company, R. (2005a). Identification of the S3 self-incompatibility allele in almond by specific primers. *Spain Journal of Agriculture Research*, 3, 296-303.
- Alonso, J. M. & Socias i Company, R. (2005b). Differential pollen tube growth in inbred self compatible almond genotypes. *Euphytica*, 144, 207-213.
- Alonso, J. M. & Socias i Company, R. (2005c). Self-incompatibility expression in self-compatible almond genotypes may be due to inbreeding. *Journal of American Society of Horticulture Science*, 130, 865-869.
- Boscovik, R., Tobutt, K. R., Batlle, I. & Duval, H. (1997). Correlation of ribonuclease zymograms and incompatibility genotypes in almond. *Euphytica*, 97, 167-176.
- Boscovik, R., Tobutt, K. R., Duval, H., Batlle, I., Dicenta, F. & Vargas, F. J. (1999). A stylar ribonuclease assay to detect self-compatible seedlings on almond progenies. *Theoretical and Applied Genetics*, 99, 800-810.
- Boscovik, R., Tobutt, K. R., Batlle, I., Duval, H., Martinez-Gomez, P. & Gradziel, T. M. (2003). Stylar ribonuclease in almond: correlation with, and prediction of incompatibility genotypes. *Plant Breeding*, 122, 70-76.
- Channuntapipat, C., Sedgely, M. & Collins, G. (2001). Sequences of the cDNAs and genomic DNAs encoding the S₁, S₇, S₈ and S_f alleles from almond (*Prunus dulcis*). *Theoretical and Applied Genetics*, 103, 1115-22.
- Channuntapipat, C., Wirthensohn, M., Ramessh, S. A., Batlle, I., Arus, P., Sedgely, M. & Collins, G. (2003). Identification of incompatibility genotypes in almond (*Prunus dulcis* Mill) using specific primers based on the introns of the S-alleles. *Plant breeding*, 122, 164-168.
- Dicenta, F. & Garcia, J. E. (1993). Inheritance of self-compatibility in almond. *Heredity*, 70, 313-317.
- Godini, A. (1981). Observing pollen tube growth in self-compatible almond cultivars by mean of fluorescence. *Option Mediterraneennes*, 81, 77- 82.
- Godini, A. (2002). Almond fruitfulness and role of self-fertility. *Acta Horticulturae*, 591(2002), pp.191–204
- Hormaza, J. I. & Herrero, M. (1996). Dynamics of pollen tube growth under different competition regimes. *Sex Plant Reprinted*, 9, 153-160.
- Kester, D. E., Gradziel, T. M. & Micke, W. C. (1994). Identifying pollen incompatibility groups in California almond cultivars. *Journal Of American Society of Horticulture Science*, 119, 106-109.
- Lopez, M., Mnejja, M., Rovira, M., Collins, G., Vargas, F. J., Arus, P. & Batlle, I. (2004). Self- incompatible genotypes in almond re-evaluated by PCR, stylar ribonucleases, sequencing analysis and controlled pollinations. *Theoretical and Applied Genetics*, 109, 954-964.
- Lopez, M., Mnejja, M., Romero, M. A., Vargas, F. J. & Batlle, I. (2005a). Use of SF specific PCR for early selection of self-compatible seedling in almond breeding. *Option Mediterranean's SerieA*, 63, 269-274.
- Lopez, M., Romero, M. A., Vargas, F. J., Mnejja, M., Arus, P. & Batlle, I. (2005a). Ferancoli, a late flowering almond re-classified as self-compatible. *Plant Breeding*, 124, 502-506.
- Ma, R. & Oliveira, M. (2001b). Molecular identification of S-genotypes of almond (*Prunus dulcis*). *Acta Horticulturae*, 546, 575-580.

19. Martinez –Gomez, P., Lopez., M., Alonso, J. M., Ortega, E., Batlle, I., Socias i Company, R., Dicient, F., Dandekar, A. M. & Gradziel, T. M. (2003). Identification of self –incompatibility alleles in almond and related prunus species using PCR. *Acta Horticulturae*, 622, 397-401.
20. Ortega, E., & Dicenta, F. (2003). Inheritance of self-compatibility in almond. *Theoretical and Applied Genetics*, 106, 904-911.
21. Ortega, E. & Dicenta, F. (2004). Suitability of four methods to identify self –compatible seedlings in an almond breeding programme. *Journal of Horticultural Science & Biotechnology*, 79(5), 747-753.
22. Socias i Company, R., Kester, D. E. & Bradley, M. V. (1976). Effect of temperature and genotype on pollen tube growth in some self –compatible and self –incompatible almond cultivars . *Journal of American Society of Horticulture Science*, 101, 490-493.
23. Socias i Company, R. (1990). Breeding self –compatible almonds. *Plant Breeding Review*.8:313-338.
24. Socias i Company, R. (2001). Different growth of almond pollen tubes in three environments. *Cahiers option Mediterranean's*, 56, 59-64.
25. Socias i Company, R. & Alonso, J .M. (2004). Cross-incompatibility of Ferragnes and Ferralise and pollination efficiency for self –compatibility transmission in almond. *Euphytica*, 135, 333-338.
26. Tamura, M., Ushigima, K., Sassa, H., Hirano, H., Tao, R., Gradziel, T. M. & Dandekar, A. M. (2000). Identification of self–incompatibility genotypes of almond by allele specific PCR analysis. *Theoretical and Applied Genetics*, 101, 344-349.