

( )

**(*Allium sativum* L.)  
AFLP**

\*

( // : // : )

**(*Allium sativum* L.)**

**AFLP**

**AFLP**

*MseI EcoRI*

(% / )

**AFLP**

(% )

**AFLP**

**AFLP**

(AFLP)

*Allium sativum* :

(*Allium sativum*)

(Rubatzky & Yamaguchi,

.1997; Abdemishani & Shahnejatbooshehri, 1998)

(Etoh & Simon, 2002)

(Mousavi, 1994)

( )

(Mousavi, 1994; Dashti,

2003)

(Etoh & Simon, 2002)

AFLP

(*Allicin*)

(Baghalian et al., 2005)



(1995) Maaß & Klaas .

(1999) Matus et al.

**DNA**

Murray & Thompson

DNA

(1980)

DNA

**AFLP**

(Bosland & Votava, 2000)

(1995) Vos et al.

AFLP

AFLP

DNA

:

(Odonougue et al., 1994; Maguire, 2002)

**(Digestion)**

AFLP

*Mse*I *Eco*R I

DNA

*Eco*R I

DNA

/ *Mse* I

AFLP

... (*Allium sativum* L.) :

( ) ( )

**(Adaptor Ligation)**

: Adaptor  
ATP  
*Mse* I *EcoR* I  
T4 DNA Ligase  
DNA

---

/	E-ACA/M-CTC
/	E-ACG/M-CTA
/	E-AGC/M-CAA
/	E-AGC/M-CAT
/	E-AGC/M-CAT

**(Pre Amplification)**

(E000) :  
/ (E000) *Mse* I *EcoR* I  
(dNTPs)  
DNA DNA (*Taq*)

DNA .

DNA

- %

( ) ( )  
( )

**(Selective Amplification)**

:

) *Mse*I *EcoR* I  
( ,

(1993) Bassam et al.

DNA

DNA)

DNA

(Maab & Klaas, 1995)

.(

.( )

( )  
( ) ( )  
( )  
) ( )

- 
1. International Plant Genetic Resources Institute (IPGRI)
  2. Bulb Weight (BW)

(

( )

NTSYSpc-2.02e

SPSS

AFLP

( )

**AFLP**

( )

AFLP

%

( )

AFLP

%

AFLP

%

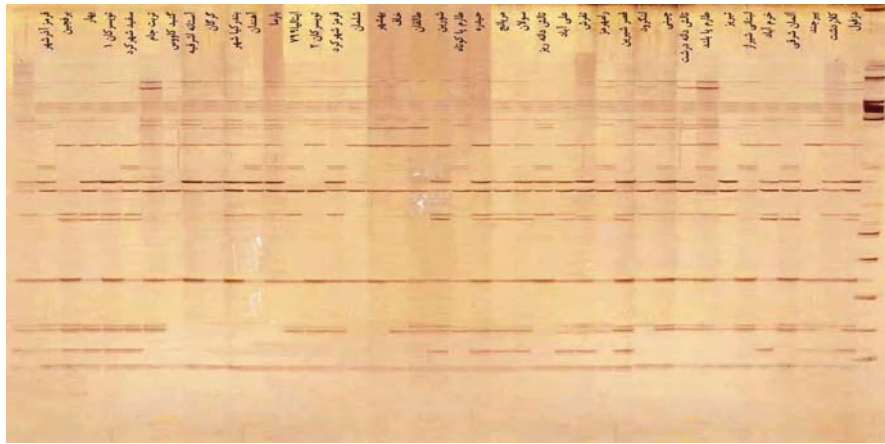
( )

- 
1. Complete
  2. Jaccard's similarity coefficient

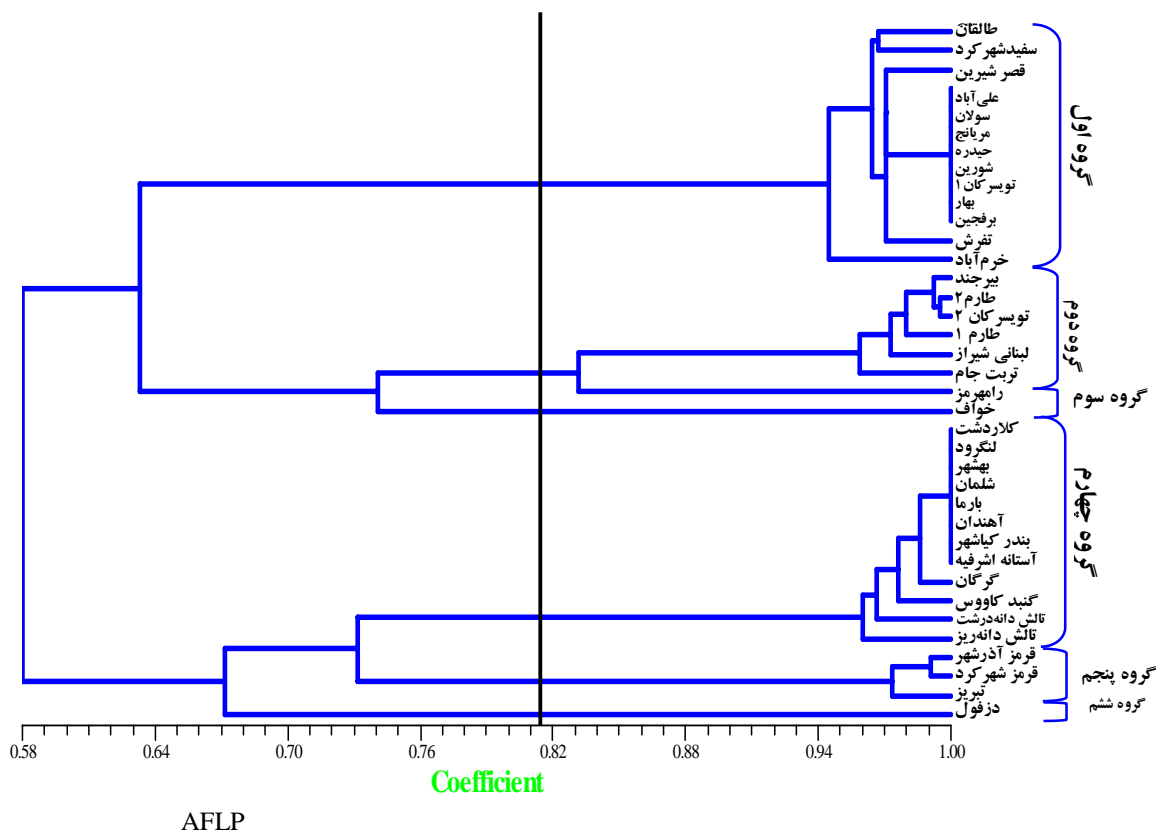
(*Allium sativum* L.)

AFLP

( )

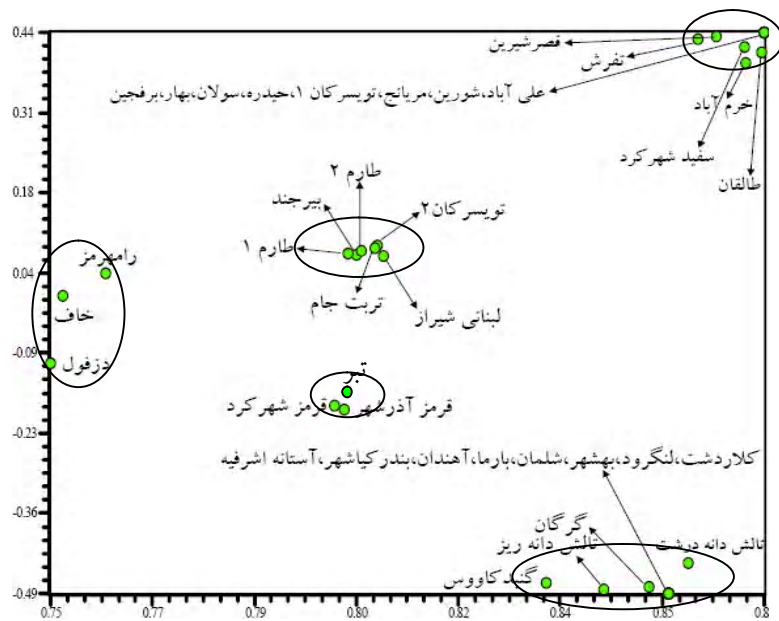
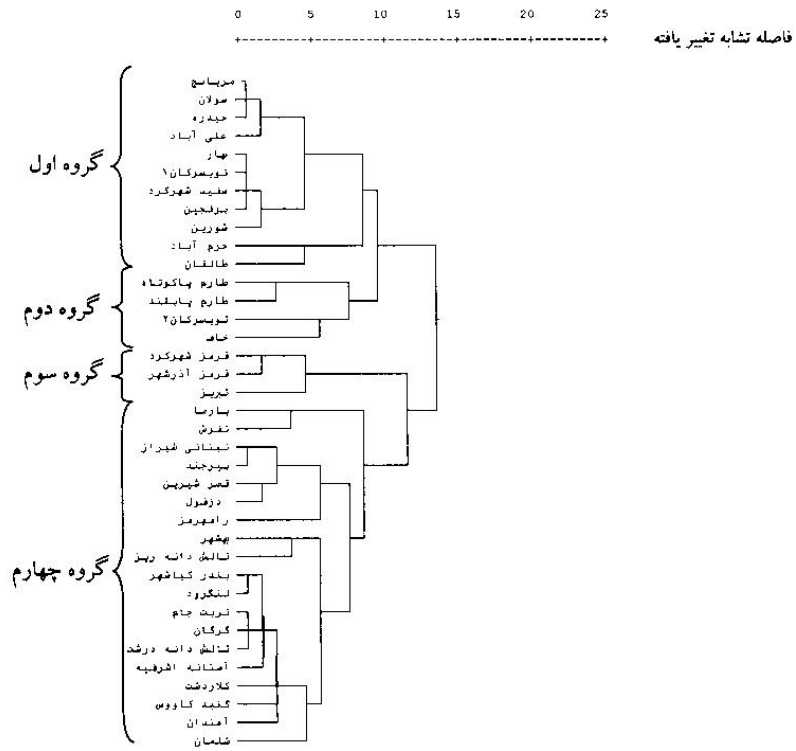


/ E-AGC/M-CAA





PCA



AFLP  
(1999) Matus et al.



(1995) Maab & Klaas

AFLP

AFLP

AFLP

DNA

( )

(Virk et al., 1995)

DNA



... (*Allium sativum* L.) :

AFLP

%

AFLP

AFLP

Longicuspis

( )

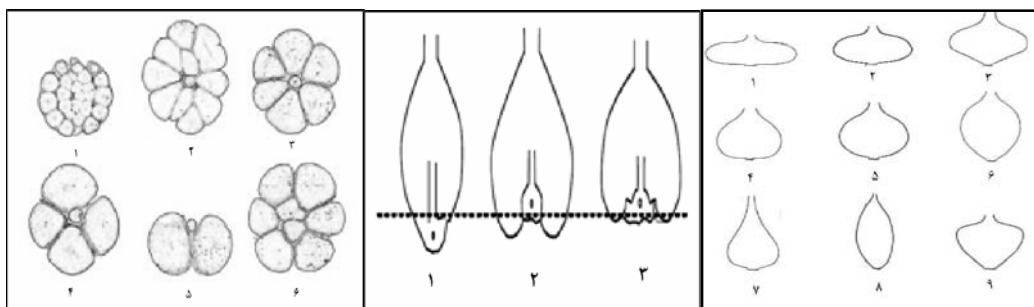
AFLP

)

( (2004) Volk et al.

(Kamentsky et al., 2005)

*Longicuspis*



( ( (

## REFERENCES

1. Abdemishani, S. & Shahnejatbooshehri, A. (1998). *Plant breeding*. Vol:1-2, Tehran University Publishing. (In Farsi).
2. Baghalian, K., Ziai, S. A., Naghavi, M. R., Naghdi Abadi, H. & Khalighi, A. (2005) Evaluation of alliin content and botanical traits in Iranian garlic (*Allium sativum* L.) Ecotypes. *Scientia Horticulturae*, 103, 155-166.
3. Bassam, B. J. & Catano-Anolles, G. (1993). Silver staining of DNA in polyacrylamide gels. *Applied Biochemistry and Biotechnology*, 42, 181-187.
4. Bosland, P.W. and Votava, E.J. (2000) *Peppers: Vegetable and spice capsicums*. CABI Publishing. pp. 294.
5. Dashti, F. (2003). *The study of genetic diversity and phylogeny of Tareh Irani in Alliums using morphological characters and molecular markers*. Ph. D. dissertation in horticultural science, faculty of agriculture, Tehran university pp.103. (In Farsi).
6. Etoh, T. & Simon, P. W. (2002) *Diversity, Fertility, and seed production of garlic*. In: Rabinowitch, H. D. and Currah, L. (Eds.) *Allium crop science: Recent Advances* CAB international, New York, pp.101-117.
7. Kamentsky, R., London, I., Shafir, Khassanov., F., Kik, C., Van Heusden, A. W., Vrieling-Van Ginkel, M., Burger-Meijer, Auger, J., Arnault, I. & Rabinowitch, H. D. (2005) Diversity in fertility potential and organo-sulphur compounds among garlics from Central Asia. *Biodiversity and Conservation*, 14, 281-295.
8. Maaß, H. I. and Klaas, M. (1995) Intraspecific differentiation of garlic (*Allium sativum* L.) by isozyme and RAPD markers. *Theoretical and Applied Genetics*, 91, 89-97.
9. Maguire, T. L., Peakall, R. & Saenger, P. (2002). Comparative analysis of genetic diversity in the mangrove species *Avicennia marina* (Forsk) Vierh.(Avicenniaceae) detected by AFLPs and SSRs. *Theoretical and Applied Genetics*, 104, 388-398.
10. Matus, I., Gonzalez, M. I. & Del Poso, A. (1999). Evaluation of Phenotypic Variation in a Chilean collection of garlic (*Allium sativum* L.) using multivariate analysis. *International Plant Genetic Resources Institute (IPGRI) Newsletter*, 117, 31-36.
11. Mousavi, A. (1994). *Study the ecophysiological characteristics of Tareh Irani*. Ms.C. thesis in horticultural science, faculty of agriculture, Tehran university. pp.87. (In Farsi).
12. Murray, M. G. & Thompson, W. F. (1980). *Rapid isolation of high molecular weight plant DNA*. *Nucleic Acid Research*, 8, 4321-4325.
13. Odonougue, L. S., Souza, E., Tanksley, S. D. & Sorrell, M. E. (1994) Relationships among North American oat cultivars based on restriction fragment length polymorphism. *Crop Science*, 34, 1251-1258.
14. Rubatzky, V. E. & Yamaguchi, M. (1997). *World vegetables: Principles, production, and nutritive values*. (2<sup>nd</sup> ed). Chapman and Hall, NY.
15. Virk, P. S., Newbery, H. J., Jackson, M. T. & Ford-Lloyd, B. V. (1995) The identification of duplicate accessions within a rice germplasm collection using RAPD analysis. *Theoretical and Applied Genetics*, 90, 1049-1055.
16. Volk, G. M., Henk, A. D. & Rechard, C. M. (2004) Genetic Diversity Among U.S Garlic Clones as Detected Using AFLP Methods. *Journal of American society for horticultural science*, 129, 559-569.
17. Vos, P., Hgers, R., Bleeker, M., Reijons, M., Vande Lee, T., Horners, M., Ferijters, A., Pot, J., Peleman, J., Kuiper, M. & Zabeav, M. (1995). AFLP: A new technique for DNA fingerprinting. *Nucleic Acids Research*, 23, 4407-4424.