

()

RAPD

*

(// : // :)

RAPD

()
(%)

()
(%)

UPGMA

/

r = /

RAPD

RAPD

(Naghavi et al., 2005)
()

(*Prunus avium* L.)

DNA
DNA

() (Naghavi et al, 2005)

DNA DNA RAPD

(1980) Murray & Thompson PCR

DNA

DNA (1998) Stosser & Gerlach

) RAPD

((2007) Cai et al. .

RAPD

A, B, C, D, E TIB MOLBIOL

RAPD

PCR ()

MgCl₂ 1X PCR (Bouzari, 2000)

/ μM / mM dNTPs / mM

DNA *Taq* DNA polymerase (Goharkhai, 1992; Arzani, 1998)

°C PCR .

DNA

°C

°C °C

°C

(i-Cycler) Bio-Rad RAPD

PCR

(Zhongping, 2007)

/ (Kadkhodaie et al. 2002; Shiran et al., 2007)

TBE (Angjelina et al., (Sarkhosh et al., 2006)

TBE (Oraguzie et al., 2003; Besnard et al., 2001)

/ μg/l

(Gel document,

UV DNA UVP)

() RAPD

RAPD

(×)

...

:

()

(Ver2.02)

NTsys

UPGMA

2. Unweighted Paired Group Method Using
Arithmetic Average

1. Jaccard's Similarity Coefficient

DNA

)

(TIB MOLBOIL

(%)

(%)

DNA

(%)

(%)

TIBMBC-04

TIBMBC-18 TIBMBA-20

TIBMBC-19 TIBMBC-19

(%)

TIBMBC-04

TIBMBC-19 () TIBMBC-08

() TIBMBC-19 TIBMBC-16

(%)

)

(

(%)

()

r= /

/

()

...

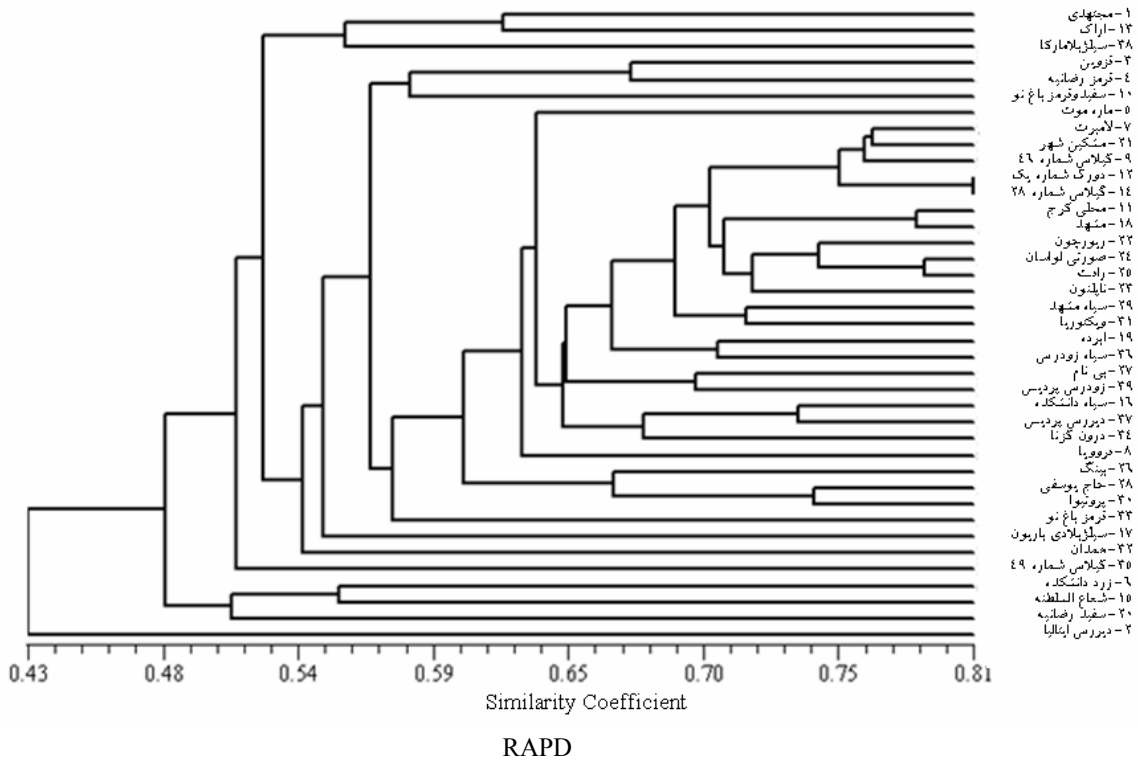
:

| (b/a)×100 | (b) | (a) | 5→ | |
|-----------|-----|-------------|-----------|--|
| / | | GGACGACCGT | TIBMBA-06 | |
| / | | CCACAGCCGA | TIBMBA-08 | |
| / | | GGA ACTCCAC | TIBMBA-09 | |
| | | AGGGCGAATG | TIBMBA-13 | |
| / | | CCACGCATCA | TIBMBA-16 | |
| / | | GAGCGCTACC | TIBMBA-20 | |
| / | | GGGCCGAACA | TIBMBB-05 | |
| | | AGGCCGGTCA | TIBMBB-09 | |
| | | ACACCGTGCC | TIBMBB-17 | |
| | | CCACGTGCCA | TIBMBC-04 | |
| | | GGTCTTCCCT | TIBMBC-08 | |
| / | | CCTCCACCAG | TIBMBC-12 | |
| / | | GTGAAGGAGG | TIBMBC-18 | |
| | | ACAAGCGCGA | TIBMBC-19 | |
| / | | AGCACTGGGG | TIBMBC-20 | |
| / | | TCACTCGCTC | TIBMBD-01 | |
| | | GAGCCCCGAA | TIBMBD-03 | |
| / | | CCACGGTCAG | TIBMBD-09 | |
| | | GA ACTCCCAG | TIBMBD-16 | |
| / | | GTTTCGCTCCC | TIBMBD-17 | |
| | | CCCAAGGGAA | TIBMBE-04 | |
| / | | GGGAAGCGTC | TIBMBE-08 | |
| / | | GGGAAAAGCC | TIBMBE-17 | |
| / | / | / | | |



TIBMBC-08

DNA



(/)

/

%

%

%

...

:

RAPD

(Goharkhai, 1993; Seyfee & Arzani, 1998; Fathi, 2000)

.(Hughes, 1996)

.(Tobutt et al., 2005)

DNA

S

DNA

(Arzani, 2002; Goharkhai, 1993; Seyfee & Arzani, 1998)

DNA

RAPD

(Asghari, 2003)

(Hayward et al.,

.1993)

RAPD

(Mahmoodi, 2005)

S

(Rasooli, 2006)

S

PCR

S)

(

S)

(

S₃S₄

.(Hasani Moghadam, 2006)

6. Besnard, G., Breton, C., Baradat, P., Khadari, B. & Berville, A. (2001). Cultivar identification in olive based on RAPD markers. *Journal of American Society for Horticultural Science*, 126, 668-675.
7. Bouzari, N. (2000). *Study on genetic diversity of Iranian sweet cherry cultivars*. Ph.D. Thesis, Faculty of Horticulture, Azade-Eslami University, Science and Research Section, Tehran. (In Farsi).
8. Cai, Y. L., Cao, D. W. & Zhao, G. F. (2007). Studies on genetic variation in cherry germplasm using RAPD analysis. *Scientia Horticulturae*, 111, 248-254.
9. Fathi, H. (2000). *Study on sweet cherry hybrid seeds germination at laboratory and field condition*. M.Sc. Thesis, Faculty of Horticulture, Azade-Eslami University, Tehran. (In Farsi)
10. Gerlach, H. K. & Stosser, R. (1998). Sweet cherry cultivar identification using RAPD-derived DNA fingerprints. *Acta Horticulturae*, 468, 63-69.
11. Goharkhai, Sh. (1992). Evaluation of fruit quantitative and qualitative characteristics and vegetative traits of sweet cherry cultivars and defining correlations between some of these characters. *Seed and Plant Journal*, 8, 39-44. (In Farsi).
12. Goharkhai, Sh. (1993). Evaluation and selection of the most suitable pollinizer for four commercial Iranian sweet cherry cultivars. *Seed and Plant Journal*, 9, 30-34. (In Farsi).
13. Hasani Moghadam, E. (2006). *Identification of S-Alleles in sweet cherry cultivars by Allele-Specific PCR amplification*. M.Sc. Thesis, Faculty of Horticulture, University of Bu-Ali Sina, Hamedan, Iran. (In Farsi).
14. Hayward, M. D., Bosemark, N. O. & Romagosa, I. (1993). *Plant Breeding, Principle and Propects*, Chapman and Hall. London.
15. Hughes, M. L. (1996). *Plant Molecular Genetics*, Prentice Hall, England.
16. Kadkhodaie, S., Tabaie-Aghdaie, S. R., Grigourian, V., Moghadam, S. M. & Modares, M. (2002). Study on genetic diversity of wild almonds population in Esfahan province using RAPD markers. *Iranian Journal of Horticultural Science and Technology*, 3, 25-36. (In Farsi).
17. Mahmoodi, A. (2005). *Study on compatibility and incompatibility of some sweet cherry cultivars with Ghermeze-Rezaeye*. M.Sc. Thesis, Faculty of Horticulture, University of Tarbiat-Modares. (In Farsi).
18. Naghavi, M., Gharayazi, R. & Hosseini Salekdeh, G. (2005). *Molecular Markers*. University of Tehran Publication. (In Farsi).
19. Oraguzie, N. C., Gardiner, S. E., Heather, H. C. M., Stefanati, M., Ball, V. G. & Vincet, M. (2001). Genetic diversity and relationships in *Malus* sp germplasm collections as determined by randomly amplified polymorphic DNA. *Journal of American Society for Horticultural Science*, 126, 318-328.
20. Rasooli, M. (2006). *Study of compatibility and incompatibility of some Iranian sweet cherry cultivars with Zarde-Daneshkade cultivar*. M.Sc. Thesis, Faculty of Horticulture, University of Tarbiat-Modares. (In Farsi).
21. Seyfee, A. & Arzani, K. (1998). Study on compatibility and incompatibility of some Iranian sweet cherry cultivars for fertilization and fruit development in Siahe-Mashhad cultivar. *Seed and Plant Journal*, 14, 34-37. (In Farsi).
22. Sarkhosh, A., Zamani, Z., Fatahi, R. & Ebadi, A. (2006). RAPD markers reveal polymorphism among some Iranian pomegranate (*Punica granatum* L.) genotypes. *Scientia Horticulturae*, 111, 24-29.
23. Shiran, B., Amirbakhtiar, N., Kiani, S., Mohammadi, S., Sayed-Tabatabaei, B. E. & Moradi, H. (2007). Molecular characterization and genetic relationship among almond cultivars assessed by RAPD and SSR markers. *Scientia Horticulturae*, 111, 280-292.
24. Tobutt, K. R., Sonneveld, T., Bekefi, Z. & Boskovic, R. (2005). Cherry (in) compatibility genotypes, an updated cultivar table. *Acta Horticulturae*, 663, 667-671.
25. Zhongping, C. (2007). Genetic characterization of different demes in *Prunus persica* revealed by RAPD markers. *Scientia Horticulturae*, 111, 242-247.