

()

RAPD

*

(/ / : / / :)

(RAPD)

DNA PCR

UPGMA

/ /

(/)

/

r = /

RAPD

(Mozaffarian, 2005;

Cerasus vulgaris

.Webster & Looney, 1996)

Cerasus

Prunoideae

(Rosaceae)

(Section)

Cerasus

Prunus

P. cerasus L.

P. avium L.

Prunus cerasus L.

P. fruticosa

Eucerasus

Prunus

(FAO, 2007)

$$2n = 4x = 32$$

$$(2n = 2x = 16)$$

(Dirlewanger et al., 2007; Webster & Looney, 1996) $(2n = 4x = 32)$

Morellos

Amarelles

Kentish

(Schmidt et

al., 1985)

(Webster &

Looney, 1996)

(Duke cherry)

$$(2n=4x=32)$$

DNA

RAPDs AFLPs SSRs

(Gerlach & Stosser, 1998; Struss et al., 2003; Tavaud et al., 2001; Wunch & Hormaza, 2002)

RAPD

(Williams et al.,

1990)

(Dirlewanger et al.,

2007; Webster & Looney, 1996)

RAPD

P. mahaleb L.

$$(2n = 2x = 16)$$

(Weeden

RAPD et al., 1992)

Mahalab

Eucerasus

(Webster & Looney, 1996)

(Besnard et al., 2001)

(Sarkhosh et al., 2006) (Oraguzie et al., 2001)

... (Zhongping, 2007)

(Gerlach & Stosser, 1998; RAPD

()

.Moreno & Trujillo, 2005; Lisek et al., 2006)

RAPD

Cherry

(Cai et al., 2007)

... :

nm nm

DNA)

() DNA (Outgroup

TIB RAPD

MOLBIOL

Taq DNA .

(dNTPs) polymerase

MgCl₂ () PCR ()

μl . () ()

mM MgCl₂ / mM X PCR DNA

Taq / μM dNTPs / (1980) Murray & Thompson

DNA ng DNA

NBDK₁₉

NBSC₁

NBSC₂

HMSC₁

HMSC₂

HMSC₃

NVSC₁

NVSC₂

NVSC₃

CHSC₁

CHSC₂

CHSC₃

HTSC₁

HTSC₂

HTSC₃

HTSC₄

HTSC₅

HTSC₆

HTSC₇

HTSC₈

HTSC₉

HTSC₁₀

NBDKD

NBSCH

NBDKM

NBDKB

HDZSC₁

HDZSC₂

HDDK₁

HDML

TIBM

BE13

TIBM BE4

HTSC₅

HMSC₂

(/) NBDK₁₉

HTSC₃

HTSC₅

r = /

UPGMA

NBDK₁₉

(HDDK₁)

CHSC₃

(NBDKB)

/ /

CHSC₃

NBDKM

PCR

°C

°C

°C

Bio-Rad

PCR

(i-Cycler)

TBE

/ μg/l

UV

DNA

NTsys (Ver 2.02)

DNA

(NBSC₁)

TIB MOLBOIL

DNA

1. Tris Boric Acid EDTA
 2. Gel document, UVP
 3. Dice
 4. Unweighted Paired Group Method Using Arithmetic Average

...

:

RAPD

5 →		
/	TGC TCG GCT C	TIBMBA-02
/	GTG CGA GAA C	TIBMBA-03
/	GGA CGA CCG T	TIBMBA-06
	TCG GGA GTG G	TIBMBA-14
/	TCA CGT GGC T	TIBMBA-03
/	CTT CGG TGT G	TIBMBA-13
	ACA CCG TGC C	TIBMBA-17
	ACA GTA GCG G	TIBMBA-02
/	GAG GCG ATT G	TIBMBA-05
	GTC ATG CGA C	TIBMBA-09
	AAC GTC GAG G	TIBMBA-10
/	CCT GGC ACA G	TIBMBA-13
/	CTG GTG CTC A	TIBMBA-16
/	CCC AAG GGA A	TIBMBA-04
/	GGG AAG CGT C	TIBMBA-08
/	TCG GTG AGT C	TIBMBA-13
/	GGG AAA AGC C	TIBMBA-17
/ / /		

NVSC₃ . (/) NBDKD
 . / (

NVSC₁ / .

NVSC₂ NVSC₁

NVSC₃

HMSC₃ HMSC₂ /

(/)

NBDK₁₉

HMSC₁ .

HMSC₃ HMSC₂ .

HMSC₁

NVSC₁ CHSC₂ CHSC₁ HMSC₁

NVSC₂

HTSC₇ HTSC₆ (/) CHSC₂ CHSC₁

HDZSC₂ HDZSC₁ HTSC₁₀ HTSC₉ HTSC₈ NVSC₂ HMSC₁

...

HDDK₁ /

(2007) Cai et al. () NBDKD

% %

()

RAPD

(2006) Lisek et al. RAPD /

HMSC₂ HTSC₉ HTSC₈ HMSC₃

HDZSC₁ HDZSC₂

RAPD

RAPD

(2005) Moreno & Trujillo

Gerlach & Stosser . RAPD

(1998)

Bellini

RAPD (1997) et al.,

RAPD (*Prunus salicina*)

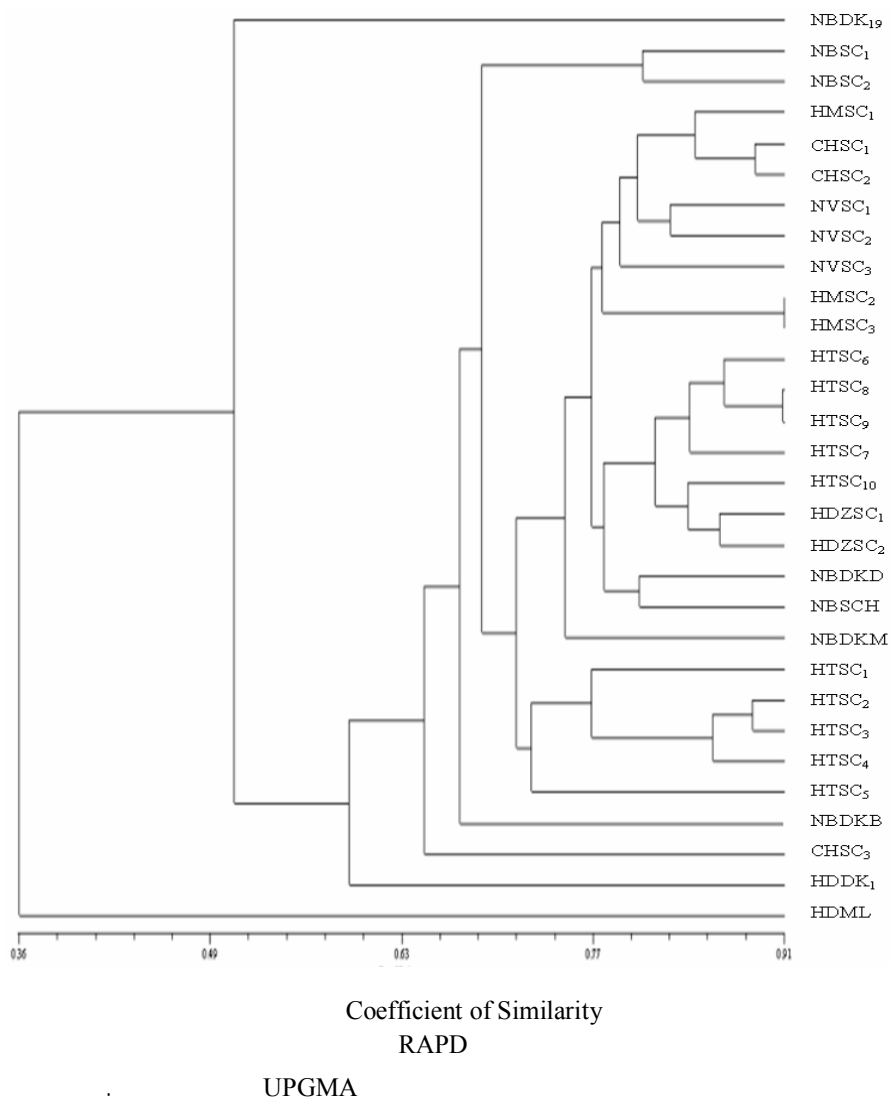
(*P. domestica*)

(*P. armeniaca*)

(*P. persica*)

Cerasus

(2007) Cai et al. RAPD



REFERENCES

1. Bellini, E., Giordani, E., Nencetti, V. & Paffetti, D. (1997). Genetic relationships in Japanese plum cultivars by molecular markers. *Acta Horticulturae*, 479, 53-56.
2. Besnard, G., Breton, C., Baradat, P., Khadari, B. & Berville, A. (2001). Cultivars identification in olive based on RAPD markers. *Journal of American Society for Horticulture Science*, 126, 668-675.
3. Cai, Y. L., Cao, D. W. & Zhao, G. F. (2007). Studies on genetic variation in cherry germplasm using RAPD analysis. *Scientia Horticulturae*, 111, 248-254.
4. Dirlwanger, E., Claverie, J., Wunsh, A. & Iezzoni, A. F. (2007). Cherry. In: Ch. Kole (Ed), *Genome mapping and molecular breeding in plants, fruit and nuts*. (pp: 103-118). Springer.
5. Food Agriculture Organization. (2007). FAOSTAT. www.faostat.fao.org/sit/567/default.aspx.
6. Gerlach, K. H. & Stosser, R. (1998). Sweet cherry cultivar identification using RAPD-derived DNA fingerprints. *Acta Horticulturae*, 468, 63-69.
7. Lisek, A., Korbin, M. & Rozpara, E. (2006). Using simply generated RAPD markers to distinguish between sweet cherry (*Prunus avium* L.) cultivars. *Journal of Fruit and Ornamental Plant Research*, 14, 53-59.
8. Moreno, J. & Trujillo, I. (2005). Genetic characterization and relatedness among cherry cultivars in a germplasm bank by randomly amplified polymorphic DNA analysis. *Agriculturae Conspectus Scientificus*, 70, 105-111.
9. Mozaffarian, V. (2005). *Trees and shrubs of Iran*. Farhang Moaser Publishers, Tehran. (In Farsi).
10. Murray, M. & Thompson, W. F. (1980). Rapid isolation of high molecular weight plant DNA. *Nucleic Acid Research*, 8, 4321- 4325.

11. Oraguzie, N. C., Gardiner, S. E., Heather, H. C. M., Stefanati, M., Ball, V. G. & Vincet, M. (2001). Genetic diversity and relationships in *Malus sp.* germplasm collections as determined by randomly amplified polymorphic DNA. *Journal of American Society for Horticulture Science*, 126, 318-328.
12. Sarkhosh, A., Zamani, Z., Fatahi, R. & Ebadi, A. (2006). RAPD markers reveal polymorphism among some Iranian pomegranate (*Punica granatum L.*) genotypes. *Scientia Horticulturae*, 111, 24-29.
13. Schmidt, H., Vittup-Christensen, J., Watkins, R. & Smith, R. A. (1985). *Cherry descriptor list*. IBPGR. Rome, Italy.
14. Struss, D., Boritzki, M., Karle, R. & Iezzoni, A. F. (2002). Microsatellite markers differentiate eight Giessen cherry rootstocks. *HortScience*, 37, 191-193.
15. Struss, D., Ahmad, R., Southwick, S. M. & Boritzki, M. (2003). Analysis of sweet cherry (*Prunus avium L.*) cultivars using SSR and AFLP. *Journal of American Society for Horticulture Science*, 128, 904-909.
16. Tavaud, M., Zanetto, A., Santi, F. & Dirlewanger, E. (2001). Structuration of genetic diversity in cultivated and wild cherry varieties using molecular markers. *Acta Horticulturae*, 546, 263-269.
17. Webster, A. D. & Looney, N. E. (1996). *Cherries, crop physiology and uses*. CAB International University Press, Cambridge.
18. Weeden, N. F., Timmerman, G. M., Hemmat, M., Kneen, B. E. & Lodhi, B. A. (1992). Inheritance and reliability of RAPD markers. Application of RAPD technology to plant breeding. *American Crop Science*, 87, 12-17.
19. Williams, J. K., Kubelik, A. R., Livak, K. J., Rafalski, J. A. & Tingey, S. V. (1990). DNA polymorphisms amplified by arbitrary primers are useful as genetic markers. *Nucleic Acid Research*, 18, 7213-7218.
20. Wünsch, A. & Hormaza, J. I. (2002). Molecular characterization of sweet cherry (*Prunus avium L.*) genotypes using peach (*Prunus persica (L.) Batsch*) SSR sequences. *Heredity*, 89, 59-63.
21. Zhongping, C. (2007). Genetic characterization of different demes in *Prunus persica* revealed by RAPD markers. *Scientia Horticulturae*, 111, 242-247.

